

Derreenacrinnig West Wind Farm

Welcome

The purpose of this Public Information Day is to inform the local community of the proposed wind farm development within the townlands of Derreenacrinnig Wind Farm.

In addition to the environmental survey work required for the project, as a responsible developer, Derreenacrinnig Wind Farm Limited believe in open and early consultation with the local community. We are hosting this event to provide information on the progress so far and to seek your feedback on the current proposals

Staff members from our Development teams are on hand today to answer any queries you may have or to discuss any aspects of constructing and operating the wind farm.

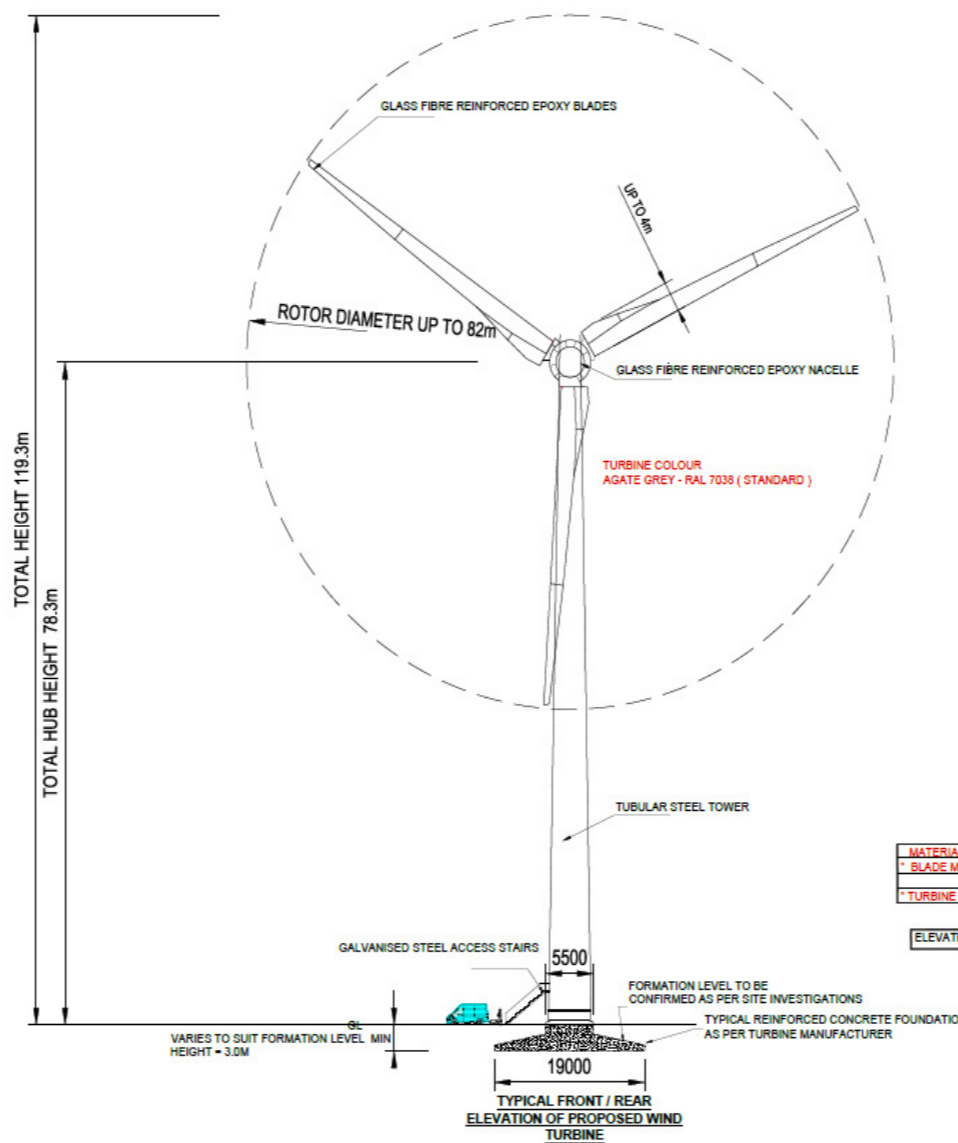
The Development Proposals

The Developer is proposing to progress a planning application for 3 turbines and associated grid connection to Cork County Council.

Number of Turbines	3
Tip Height (metres)	119
Site Capacity (MW)	6.9
Grid Connection	Ballylicky Substation

How will the wind turbines be transported?

It is proposed that the turbine components will be transported by road from Port of Foynes or Ringaskiddy Port. Initial studies suggest that turbines can be transported to the site without significant public road upgrades. A Traffic Management Plan will be developed in consultation with statutory consultees and the local community to minimise impacts from deliveries.



Key Design Considerations

A number of alternative sites, and alternative designs/ layouts were considered before the subject site and current layout was chosen. The key objective of the design process is to develop a proposal that will be suitable in the context of the local area whilst delivering the objectives of The Climate Action Plan 2024. A key consideration is the distance between houses and turbines and whilst the current wind energy development guidelines (2006) stipulate a minimum set back distance of 500m, the setback distances on this project have been increased to at least 900m from houses in the local area.

Another key principle in the design process has been to minimise environmental impacts. The site selection process involved avoiding sensitive sites such as Special Areas of Conservation, Special Protection Areas and Natural Heritage Areas. Additional design considerations included the sensitivity of the habitat on the site, archaeological constraints, ground stability and landscape sensitivities.

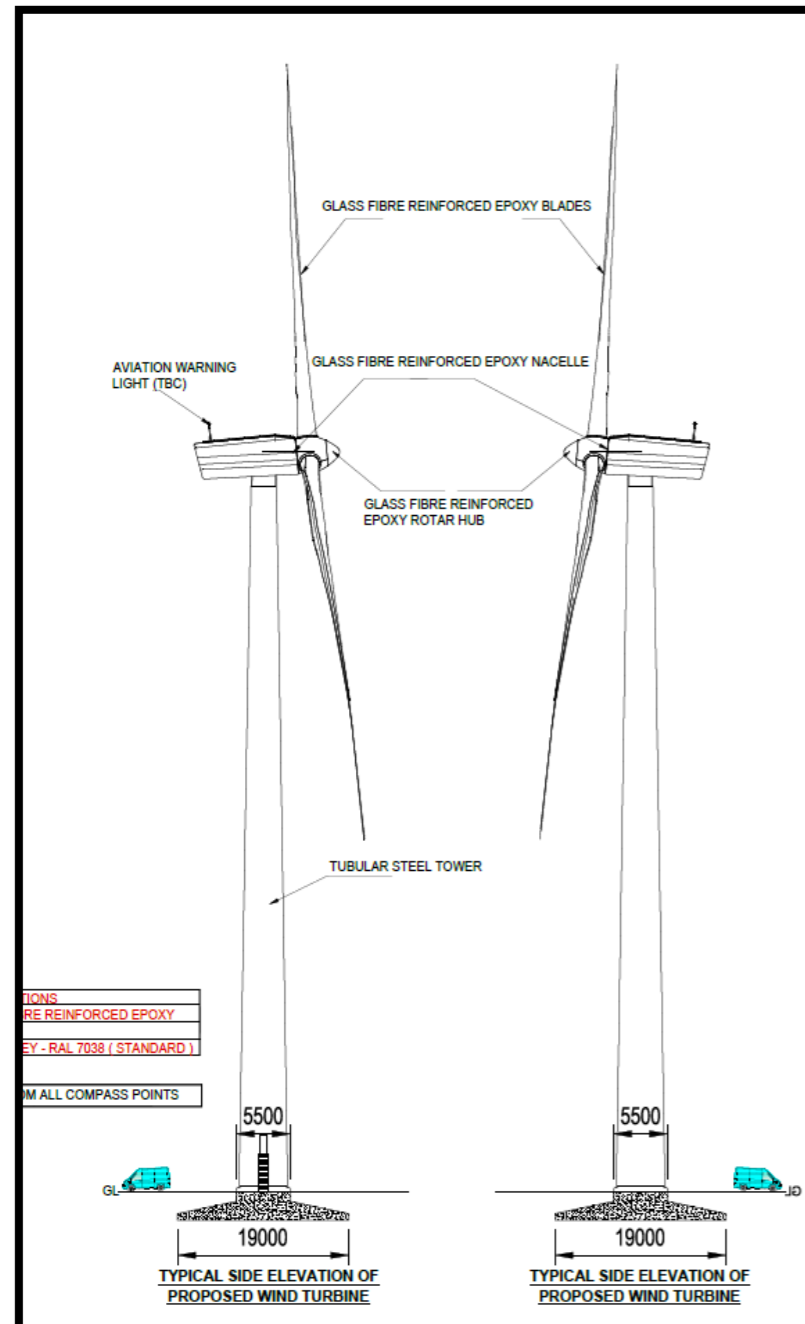
Pre-construction/Construction

It typically takes about 12-18 months to construct a wind farm. During this phase, the local community will be kept up to date with developments and will have their queries appropriately dealt with.

Derreenacrinnig West Wind Farm

Environmental Impact Assessment (EIA) and Development Strategy

Jennings O'Donovan & Partners Ltd., alongside a team of independent specialist consultants, has been tasked with undertaking extensive environmental surveys of the site and the surrounding area to inform the design of the wind farm.



Environmental Impact Assessment (EIA) is a formal part of the wind farm planning process. The Environmental Impact Assessment Report (EIAR) provides information on the receiving environment and assesses the likely significant effects of the development and proposes mitigation measures to eliminate, avoid, reduce or mitigate any potentially significant adverse effects.

The function of the EIAR is to provide information to allow the competent authority to reach a reasoned conclusion on the effects of a development and inform subsequent decisions, such as planning.

The proposed wind farm layout has evolved and been guided by the results of surveys, the feedback received from the consultation process, and the advice of the environmental consultants.

The following surveys are underway to build up this baseline information, and to inform an understanding of any environmental and technical sensitivities.

- Ecology – Focusing on avoiding any sensitive locations and habitats through sensitive design as far as practicable.
- Ornithology – Focusing on ensuring that we understand which species of bird are on the site, and how they use the site. We can then use this data to avoid any sensitive locations, through careful design.
- Hydrology – The design of the development will also seek to minimise any impacts to water resources, including any surface and groundwater features.
- Noise – These are to ensure that the turbines and associated infrastructure can be built out and operated within acceptable noise limits.
- Cultural Heritage – Focusing on avoiding any recorded onsite archaeology and ensuring, through careful design, that we avoid any unacceptable indirect effects on any offsite cultural heritage features.
- Access, Traffic & Transport – The potential transport routes will utilise trunk and major roads, as far as possible, and traffic management measures focused on minimising effects on local communities will be developed.

Derreenacrinnig West Wind Farm

Environmental Assessment Underway

Environmental Impact Assessment: Underway

Environmental Impact Assessment (EIA) is a formal part of the wind farm planning process. It involves undertaking environmental surveys of the proposed site to: Quantify and evaluate any potential significant environmental effects the wind farm may have, whether positive or adverse. Identify appropriate measures to eliminate, avoid, reduce or mitigate any potentially significant adverse effects.

The EIA for the Wind Farm will consider:

- Landscape and visual amenity effects.
- Ecology (including protected animal species and habitats).
- Ornithology.
- Noise.
- Archaeology and cultural heritage.
- Hydrology, hydrogeology, geology, soils and peat.
- Access, traffic and transport.
- Tourism, recreation, social and economic effects.
- Telecommunications and utilities.
- Shadow Flicker.
- Aviation and radar.
- Human health.
- Climate change.
- Waste.
- Cumulative effects with neighbouring wind farms.

Scoping August 2023

Scoping is the name given to the initial consultation we undertake with stakeholders to identify key issues for us to consider when designing our wind farms.

For Derreenacrinnig West Wind Farm, the consultees include but are not limited to:

- Cork County Council
- Department of Agriculture, Food and the Marine
- Department of Culture, Heritage & the Gaeltacht [Development Application Unit] [National Parks & Wildlife Services]
- Department of Communications, Climate Action & Environment
- Irish Wildlife Trust
- Environment Protection Agency
- Inland Fisheries Ireland

Pre-application Consultation October 2024

We are hosting this event today to provide an introduction to the proposed development.

Prepare Environmental Impact Assessment 2022-2024

The Environmental Impact Assessment Report (EIAR) presents the findings of the Environmental Impact Assessment and will be submitted with our planning application. When this document is finalised, copies will be available for public viewing at locations in the vicinity of the proposed wind farm.

Submission of Planning Application 2024

We will submit a planning application to Cork County Council.

Evaluation of Decision

The determining authority will review the application, including feedback received from stakeholders. The information they receive will be used to inform their decision on the application.

Planning Decision

The determining authority will make a decision on the planning application.

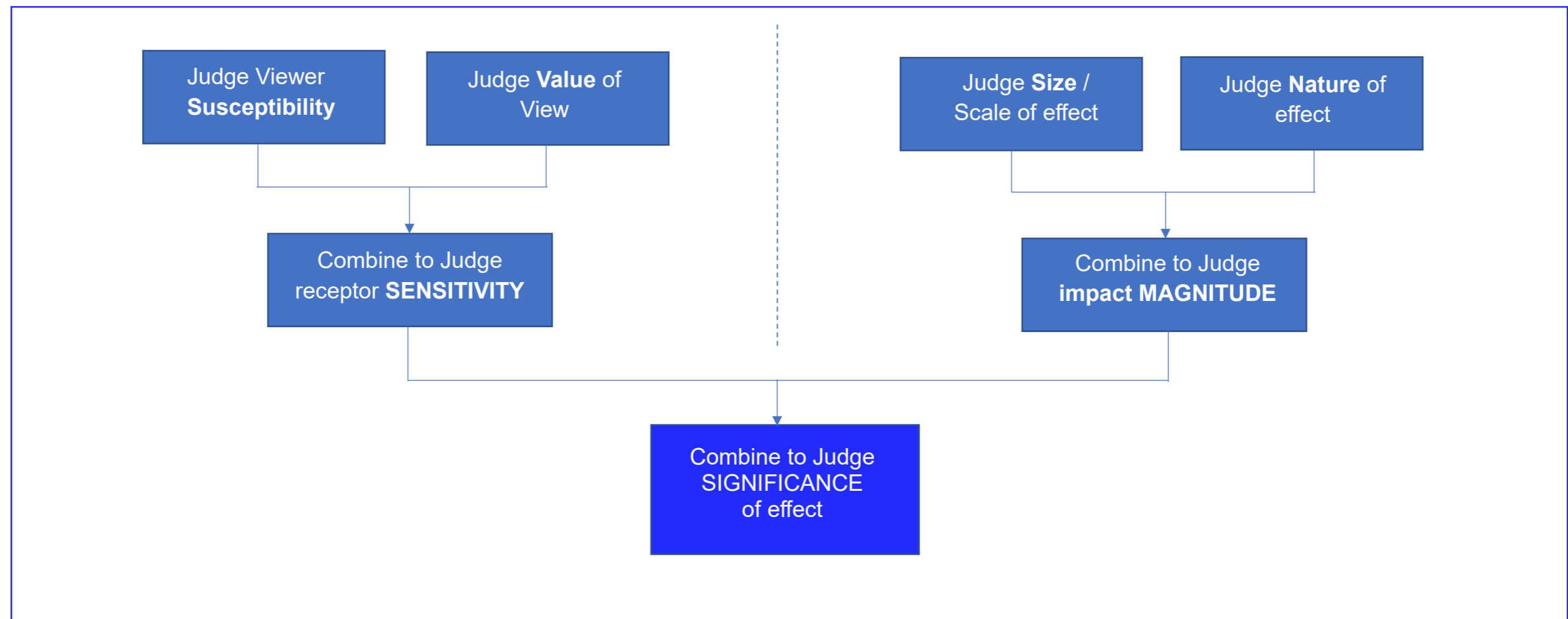
Derreenacrinnig West Wind Farm

What is Landscape and Visual Assessment (LVIA)

Landscape Impacts consider physical effects on landscape features and/or land cover as well as effects on the landscape character of an area. Wind farms have a stronger potential to influence landscape character than physical landscape fabric.

Visual impacts consider changes to views experienced by visual receptors, which are people and groups of people in a range of viewing scenarios and that can influence their sensitivity to visual change (i.e. hill walkers vs motorway commuters).

The overriding guidance document for LVIA in Ireland and the UK is the 'Guidelines for Landscape and Visual Impact Assessment (2013)'. A simplified version of the LVIA process outlined in the guidance is shown below.

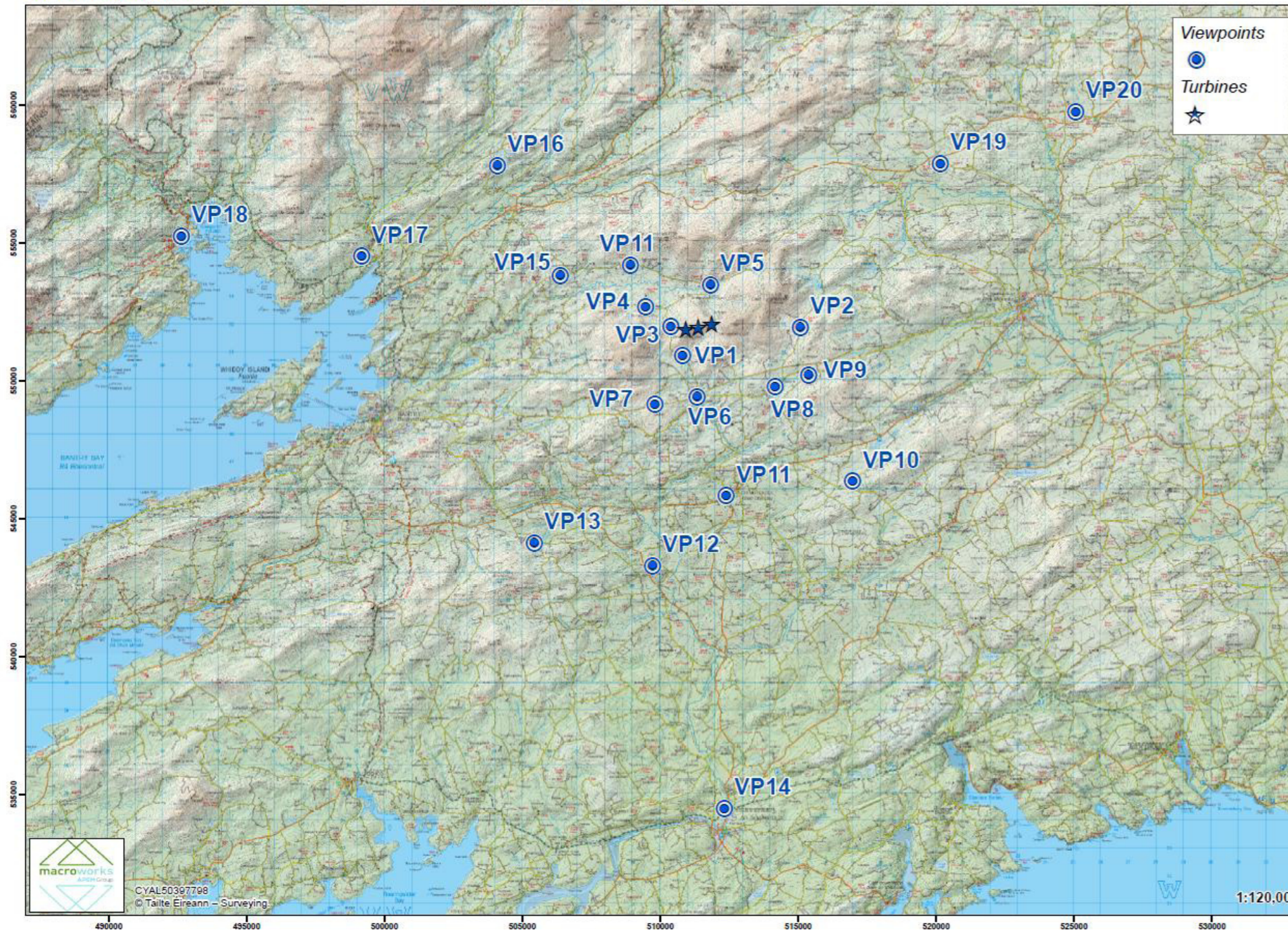


Derreenacrinnig West Wind Farm

Where will the wind farm be visible from?

Computer generated Zone of Theoretical Visibility (ZTV) maps are used to determine where the proposed turbines may be visible from in a 'bare-ground' scenario i.e. without accounting for screening by the likes of vegetation. ZTV maps also aid the selection of representative viewpoints, which are used as the basis of the visual impact assessment.

Preliminary viewpoint locations selected for the Derreenacrinnig Wind Farm project



What will the wind farm look like?

We have prepared photo-realistic 'photomontages' from each of the representative viewpoint locations. These are used as the basis of the visual impact assessment and a selection of these initial photomontages are on display today.

The preparation of photomontages is governed by strict guidance that focusses on achieving a high degree of spatial accuracy (size / location) presented in a format that reflects real-world viewing conditions (size of image / specified viewing distance).

Derreenacrinnig West Wind Farm

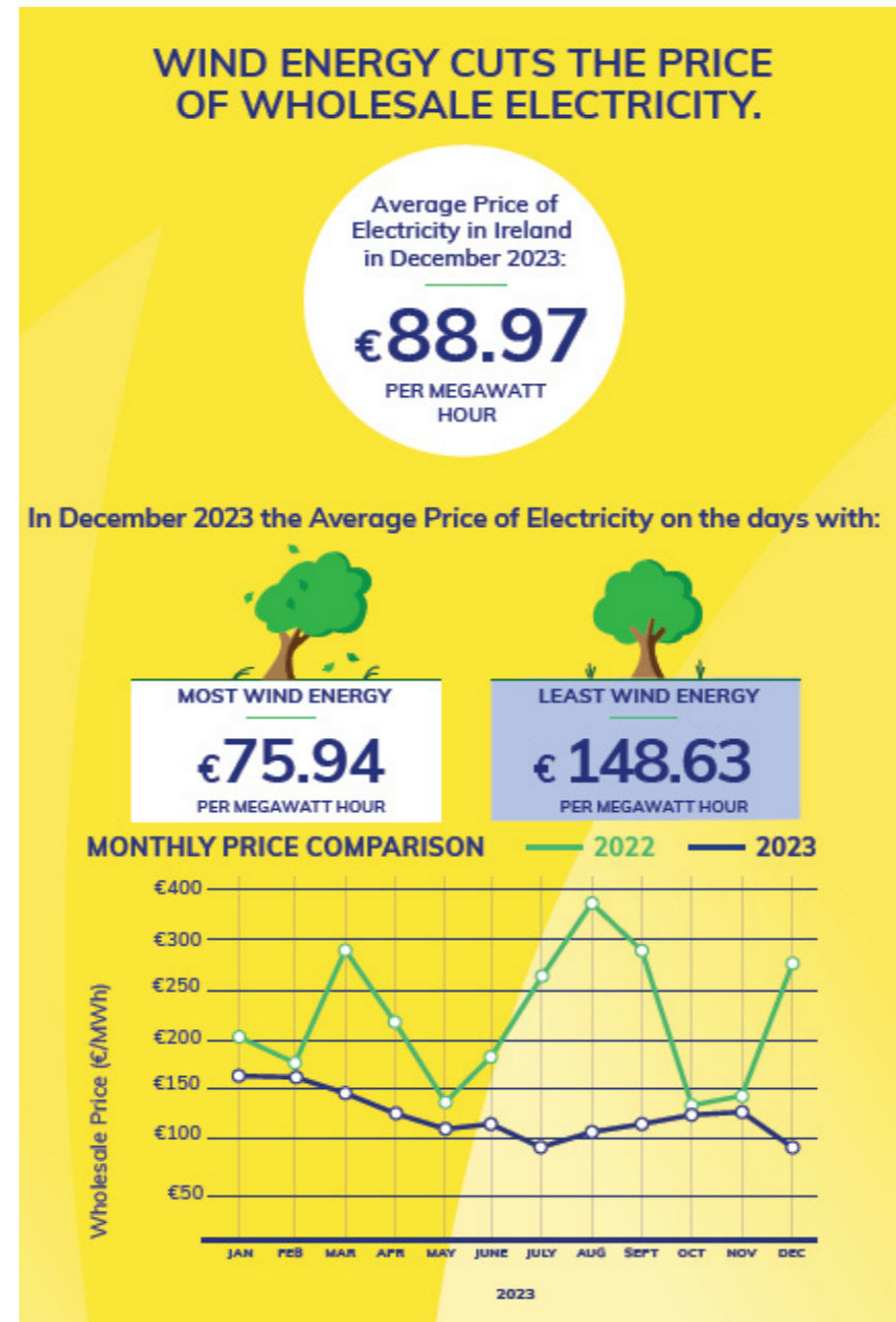
Community Benefit

A key feature of the Government's Renewable Electricity Support Scheme (RESS) is that all successful applicants are required to set up a Community Benefit Fund that focuses on sharing the economic benefits of a wind farm with the local community. For the proposed Derreenacrinnig West Wind Farm project, these benefits include:

- **Community Benefit Fund:** Establishing a community fund of up to €40,000 annually in the first 15 years of operation that will be administered by a management committee including local community representatives. The management committee will have responsibility for managing the fund-support local projects (e.g. heritage, tourism), clubs, schools, education grants, benevolent funds and energy efficiency programmes.
- **Supporting development and employment:** the proposed wind farm would directly bring c.30 jobs to the area at construction stage and support a number of long-term jobs at operational stage.
- **Supporting rural development:** the participation by local landowners is a form of rural diversification that can support farm incomes. Local services, suppliers and products will be used where possible.

Near Neighbourhood Scheme

As part of the Community Fund, Derreenacrinnig West Wind Farm are proposing a Near Neighbour Scheme offering an annual contribution towards the domestic electricity costs of households living in the immediate vicinity of the wind farm. Priority will be given to the nearest neighbours who live close to the project.



Figures from Wind Energy Ireland Annual Wind Energy Report 2023 (January 2024).

Environmental Benefits

Displacing fossil fuels and the emissions created is an important benefit of wind energy. Typically, a 6.9MW wind farm would displace up to 225,000 tonnes of carbon dioxide (CO₂) being produced by fossil fuels over the 30-year life of the wind farm.

This project can deliver clean, green renewable electricity. It can help lower Ireland's carbon footprint, reduce green-house gases, improve air quality, and help to fight climate change. It will also help the Irish Government deliver on its 2030 renewable energy and climate targets and improve energy of security supply.

Security of Supply

The Government of Ireland issued the National Energy Security Framework (April 2022) to address Ireland's energy security needs in the context of the war in Ukraine. Ireland has one of the highest rates of imported energy in Europe with import dependency increasing to 72% in 2020. By producing more renewable electricity locally, some of these imports can be avoided. The energy produced from a 6.9 MW Wind Farm would power the equivalent of 4,550 homes with renewable energy.

This builds security of energy supply improves our nation's energy independence and will help to stabilise and reduce energy costs. Competitive energy prices are also important in attracting foreign direct investment (FDI).

Derreenacrinnig West Wind Farm

Project Overview

- The proposed wind farm is located 12km west of Dunmanway.
- The total red line area is approximately 81 hectares and ranges in elevation from 200m to 402 mOD (Malin Head).
- 3 Turbines generating clean, renewable electricity Construction of three wind turbines each typically of 2.3 megawatts (MW) with a combined output of approx. 6.9MW.
- Each turbine will have a rotor diameter of up to 82m, a hub height of 78.3m and an overall tip height of 119.3m.
- Completion of existing site tracks/roads, including the existing access track from the public road.
- Reuse of existing of access tracks and hardstandings.
- Grid Connection via an overhead line and underground cable connecting to Ballylickey 110kV Substation.
- Capacity to power between 4,550 houses annually.



View from T3 location towards the eastern boundary



View of site track towards the east



View of civil works at site entrance

The Site

- A decision to grant planning permission was made in October 2011 by Cork County Council under Reg. Ref. 10/857 for a wind farm, comprising 7 wind turbines, an electrical compound and sub-station and all related electrical equipment, subject to 29 conditions.
- The decision was appealed by third parties to An Bord Pleanála who subsequently upheld the grant of planning permission on 5th December 2012, subject to 16 conditions under An Bord Pleanála PL88.239767 Decision. A 10-Year Permission was granted.
- The originally submitted development comprised of seven number wind turbines with a hub height of 55 metres and a rotor diameter of 52 metres and all ancillary site works.
- The planning permission for the consented Derreenacrinnig West Wind Farm was implemented, with works on the site commencing on the 28th of August 2017.
- Civil works well advanced although there is no activity at present.
- Site entrance developed and all site roads have been substantially completed.
- Six of the seven hardstands adjacent to each turbine location are substantially completed.

Derreenacrinnig West Wind Farm

Climate Change

There is an urgent need to fight climate change and prepare for society's rising demand for energy.

Renewable energy, wind energy in particular, is identified across international, national and regional policy as being required to play a vital role in mitigating climate change by transitioning to a low carbon economy and society.

The Intergovernmental Panel on Climate Change; IPCC, is made up of scientists from around the world and provides regular assessments on the scientific basis of climate change, its impacts and future risks. In April 2022 the IPCC released their AR6 report.

The report shows that human induced climate change is causing impacts of an extent and magnitude much larger than previously estimated. It highlights the widespread, dangerous disruptions caused in nature and shows how billions of people's lives are being impacted. It outlines how countries are falling behind on policies and actions needed to limit global temperature increases and achieve net zero emissions.

Reducing carbon emissions by phasing out fossil fuels is stated in the report as being urgently needed. Renewable energy such as wind, is highlighted as an adaptation to displace fossil fuels, and so reduce emissions and mitigate climate effects.

Climate Change Impacts

"The current changes in the planet's climate are transforming the world. Each of the last four decades have been warmer than any previous decade since 1850 and the last two decades have included 18 of the warmest years on record. Extreme weather events, such as forest fires, heatwaves and floods, are becoming more frequent in Europe and elsewhere.

Evidence for warming of our climate system is beyond dispute. There is unequivocal evidence that human influence has warmed the climate at a rate that is unprecedented in the last 2,000 years. It is also becoming increasingly clear that the weather and climate extremes now being experienced are being driven by climate change which is caused by our actions.

These changes will cause extensive direct and indirect harm to Ireland and its people, as well as to other countries more exposed and less able than we are to withstand the associated impacts, which are predicted to include:

- *Rising sea-levels threatening land and particularly coastal infrastructure*
- *Extreme weather, including more intense storms and rainfall affecting our land, coastline and seas*
- *Further pressure on our water resources and food production systems with associated impacts on river and coastal ecosystems*
- *Increased likelihood and scale of river and coastal flooding*
- *Greater political and security instability*
- *Displacement of populations with increased numbers of climate refugees*
- *Heightened risk of the arrival of new pests and diseases*
- *Poorer water quality*
- *Changes in the timing of lifecycle events for plants and animals on land and in the oceans*

Renewable Energy Directive (2023/2413/EU)

The European Commission recently published guidance for EU Member States adopting domestic measures to scale up their renewable energy deployment known as The Renewable Energy Directive (2023/2413/EU), commonly known as RED III.

RED III sets an EU-wide target of 42.5% renewable energy consumption by 2030, which stands as a significant increase relative to the equivalent 32% target under RED II.

Member States were required, no later than 21 February 2024, to give effect to a legal presumption that renewable energy plants are in the "overriding public interest" when carrying out certain environmental and planning assessments under EU law.



Derreenacrinnig West Wind Farm

Ecological Considerations

Designated Conservation Areas

No designated conservation areas occur within or in close proximity to the wind farm site

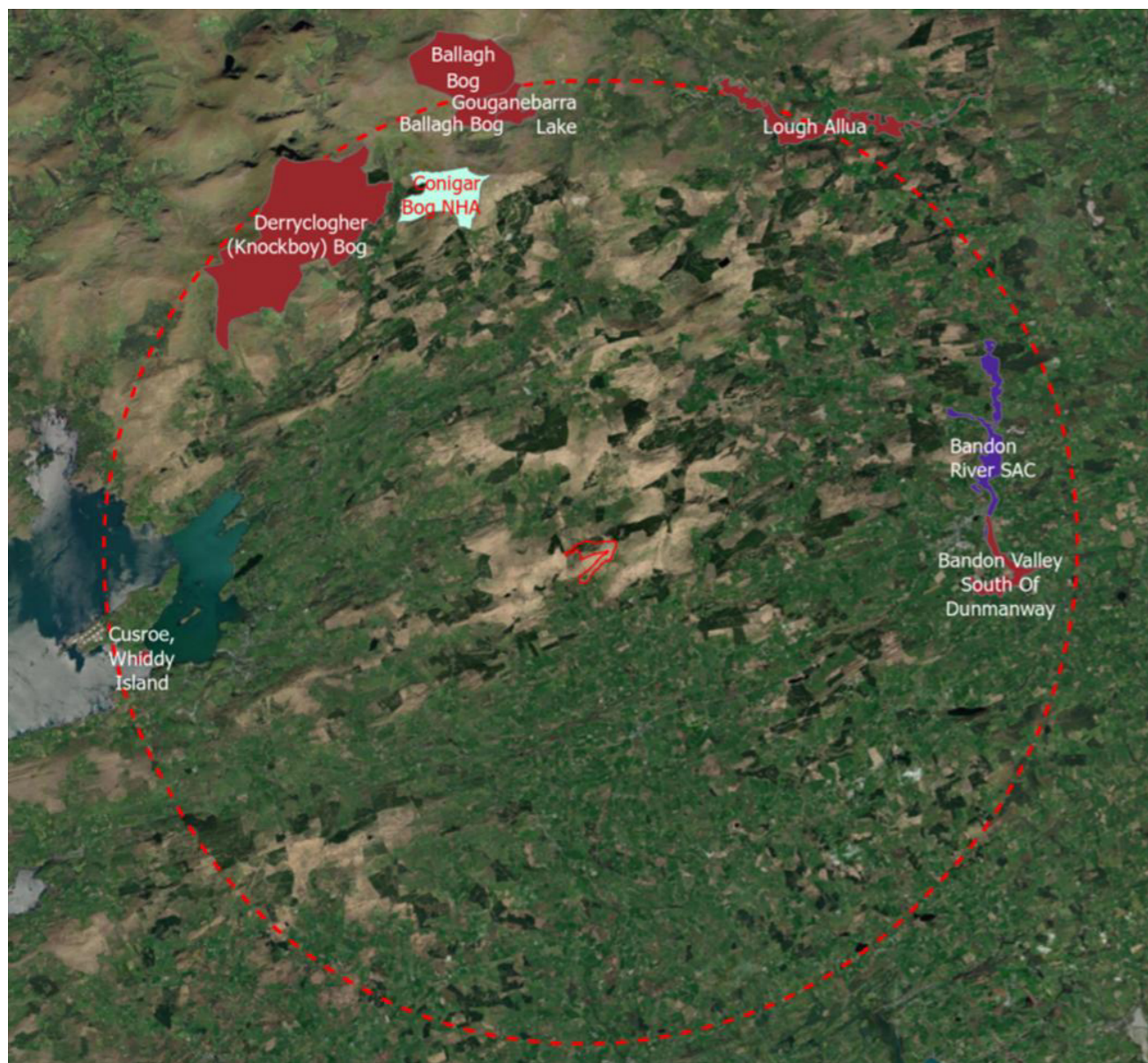
The nearest is the Bandon River SAC, located approximately 11.5km to the east.

The wind farm site is not located within the Bandon River SAC catchment.

No Special Protection Areas occur in the wider area surrounding the wind farm site

No Natural Heritage Areas occur within the wider surrounding the wind farm site.

The nearest pNHA to the wind farm site is the Bandon Valley South of Dunmanway pNHA, located approximately 11.5km to the east.



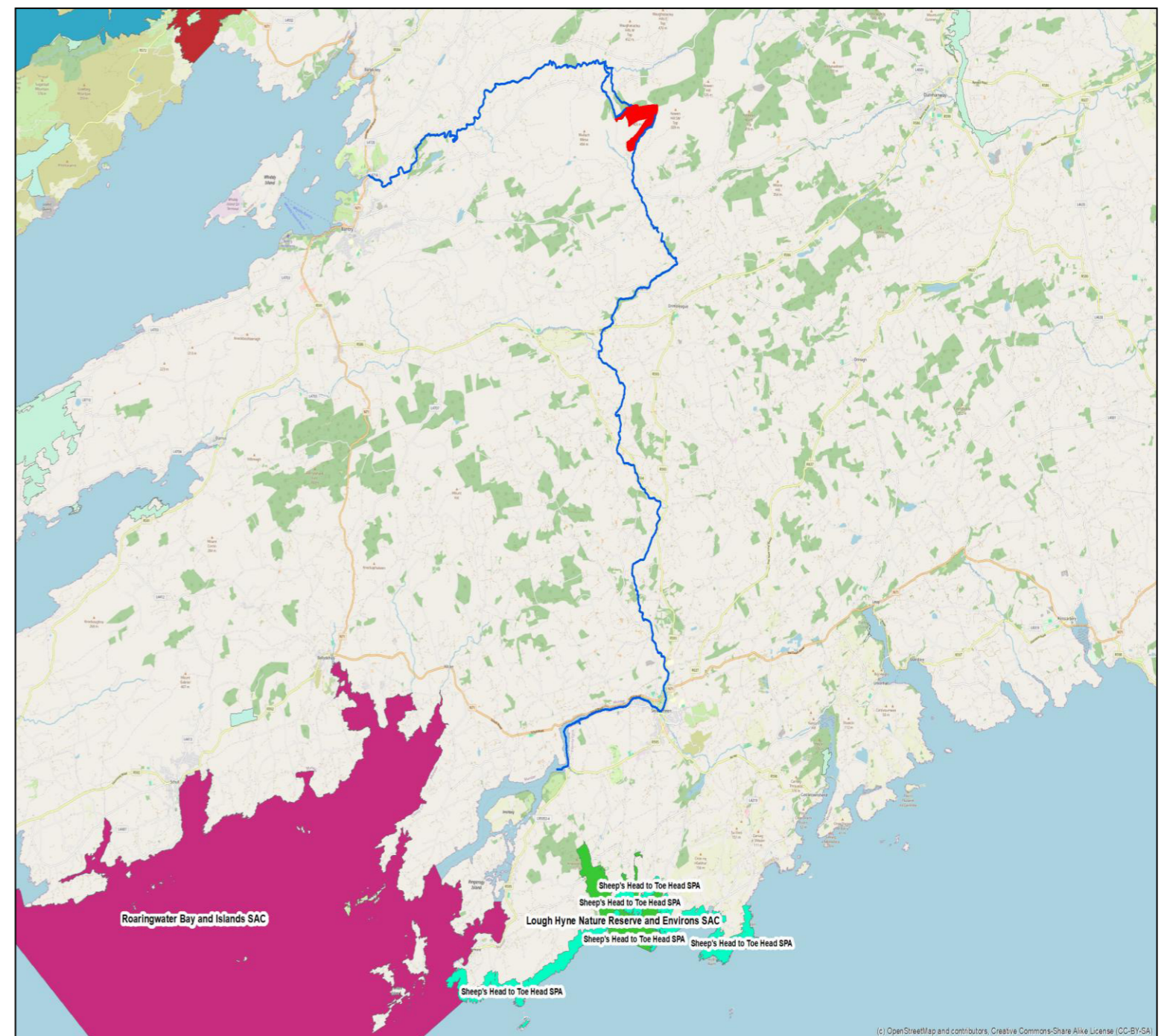
Designated Conservation Areas

Hydrological pathway

The wind farm site is located within the Ilen and Meelagh River catchments.

No designated conservation areas occur downstream of the wind farm site between the site and the coast.

The Roaringwater Bay and Islands SAC occurs in coastal waters to the southwest of the mouth of the Ilen River.



Derreenacrinnig West Wind Farm

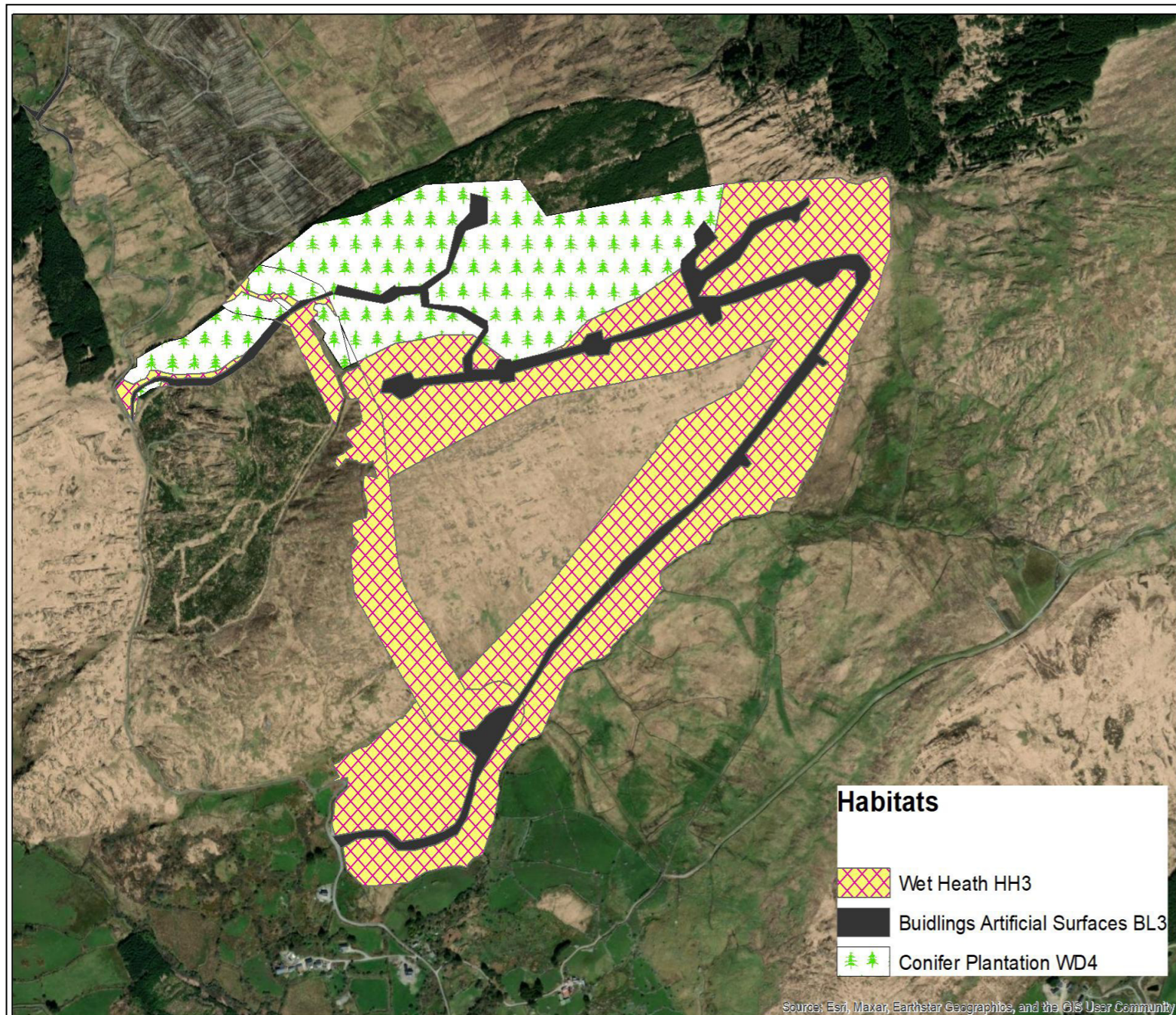
Habitats

The habitats occurring within the wind farm site consist of:

Buildings and artificial surfaces in the form of existing access roads and hardstanding

Wet heath dominated by purple-moor grass and

Conifer plantation.



Fauna

Fauna surveys have been completed at and surrounding the wind farm site.

Kerry Slug has been recorded on exposed siliceous rock within the wind farm site boundary.

No evidence of the presence of protected non-volant mammals such as badgers has been recorded.

The bird assemblage at the wind farm site during the breeding season is dominated by ground nesting species such as Skylark and Meadow Pipit.

Raptors in the form of Buzzard and Kestrel are the most active species at and in the vicinity of the wind farm site.

Other species such as hen harrier and Peregrine have been recorded rarely.

Snipe roosts within the wet heath during the non-breeding season. No other wetland bird have been observed using the wind farm site.

Chough occurs at lower elevations in the wider surrounding the site to the southwest and west of the wind farm site.



Derreenacrinnig West Wind Farm

What is the next step in developing the project?

Environmental surveys are underway. These are being used to further develop and refine the proposed site design and assess any environmental effects.

We have used the survey data gathered to inform an Indicative Developable Area, with an initial focus on avoiding any potentially significant effects where possible through the sensitive siting of infrastructure.

Where necessary, mitigation measures will then be identified to eliminate or further reduce any remaining potential significant effects.

Once the EIAR process is complete, Derreenacrinnig West Wind Farm Ltd will apply to Cork County Council for planning permission to develop the proposed wind farm.

The intention to submit an application for the project will be advertised in local/national newspapers.

Site notices will be erected at the site.

When all documents have been received and validated Cork County Council. It will also be available at the offices of Cork County Council.

Contact Us

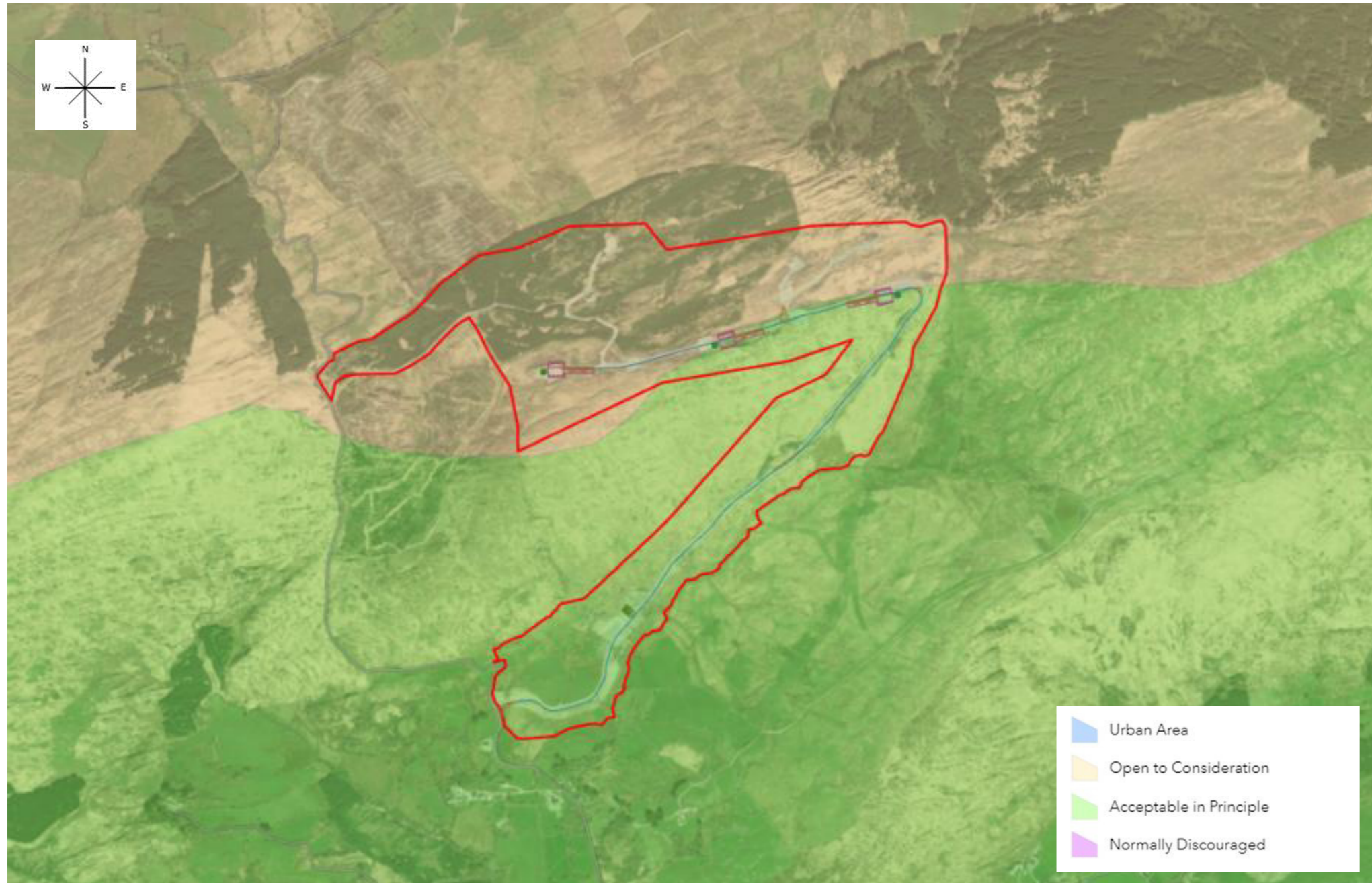
Derreenacrinnig West Wind Farm Ltd is committed to being a responsible developer of renewable energy and we strive to be good neighbours in all areas of our work. We encourage as many people as possible to get involved in and to learn more about our projects, maximising the local economic, social and environmental benefits our developments can create locally.



Timelines

Planning application submission		Q4 2024
Planning Decision phase	1-1.5 years	2025
Pre-construction Phase	1.5-2 years	2026
Construction Phase	1.5-2 years	2027
Operational Phase	40 Years	2027- 2067

Derreenacrinnig West Wind Farm



Cork County Development Plan 2022-2028

The site is designated as **'Acceptable in Principle'** in the wind energy map.

ET 13-6: Acceptable in principle:

Commercial wind energy development is normally encouraged in these areas subject to protection of residential amenity particularly in respect of noise, shadow flicker, visual impact and the requirements of the Habitats, Birds, Water Framework, Floods and EIA Directives and taking account of protected species of conservation concern.

County Development Plan Objective ET 13-7: Open to Consideration

Commercial wind energy development is open to consideration in these areas where proposals can avoid adverse impacts on:

- Residential amenity particularly in respect of noise, shadow flicker and visual impact;
- Urban areas and Metropolitan/Town Green Belts; and other sites and locations of significant ecological value.
- Architectural and archaeological heritage;
- Natura 2000 Sites (SPA's and SAC's), Natural Heritage Areas (NHA's), proposed Natural Heritage Areas
- Visual quality of the landscape and the degree to which impacts are highly visible over wider areas. In planning such development, consideration should also be given to the cumulative impacts of such proposals.

Derreenacrinnig West Wind Farm

Noise

Baseline line noise monitoring has yet to be carried out but 3 locations for monitoring is being planned with simultaneous monitoring using a Lidar. There is no Met Mast on Site. See Figure 1 below showing location of receptors and predicted noise levels.

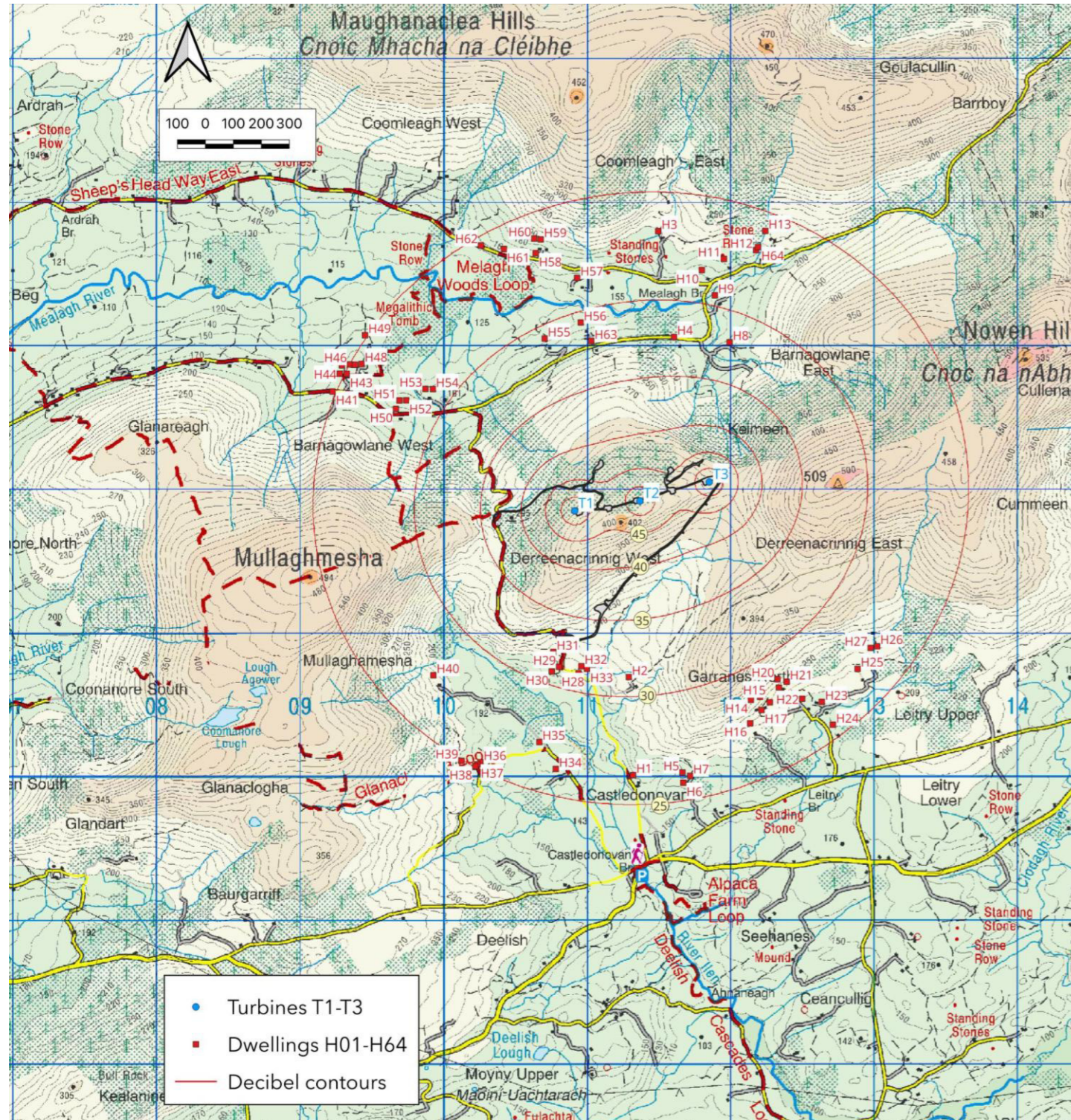


Figure 1 Location of Receptors and Predicted Noise Levels

The effects of noise from the operation of the Development has been assessed using the methodology in the 2006 Guidelines, the methodology described in ETSU-R-97 and the IOA Good Practice Guide.

Noise levels during operation of the Development have been predicted using the best practice calculation technique, compared with the noise limits in the 2006 Guidelines.

There has been a consultation process in relation to the revision of the 2019 Wind Energy Development Guidelines. This document provided the basis for a discussion on amendments of the noise limits applicable to wind turbine developments.

A noise level of 43dBA L90 protects sleep at night-time. The maximum noise level predicted from the wind farm is less than 33dBA and below the minimum noise levels in the draft 2019 guidelines.

Noise during construction, operation and decommissioning of the wind farm will be managed to comply with best practice, legislation and guidelines current at that time so that effects are not significant.

All turbines have software control incorporated so that the sound power levels can be reduced by direction and energy output if lower limits are applied.